



# THE ORIGINAL™ **RAILER** LATCH

Stock Yard Gates | All Farm Gates | Garden Gates

***Product Guide  
2015-2016***

*Amuri*  
PRODUCTS LTD.



*Advice & Experience*



*Huge Range*



*Fast Service*



*Commitment*



**Nationwide  
*EXPRESS*  
Supplier**



**Phone: 03 312 5809**

**Freephone: 0800 966 333**

**Fax: 03 312 5840**

**Freefax: 0800 961 333**

**Email: [sales@amuriproducs.co.nz](mailto:sales@amuriproducs.co.nz)**

**Website: [www.amuriproducs.co.nz](http://www.amuriproducs.co.nz)**





# Amuri Products Ltd

**is a family owned and operated, caring and independent company, dedicated to excellent service – people you can trust and will deliver top value for money.**

**Jailer slam latches were first designed in 1997 to meet the needs of a large north Canterbury farm. The jailer latch has developed from the originally known Wesco slam latch.**

**At Amuri Products Ltd our goal is exceptional customer service. Our experienced friendly team will make your selection and ordering easier and more enjoyable. If you order before 1pm we will send out your order the same day.**

**All the best,  
From the team at Amuri Products Ltd.**

**QUALITY**  
Products & Brands



Great range in stock ready for your order.



**FREE!**  
PRIORITY delivery



on all orders over \$65, a charge may apply for rural and rapid consignments.

**FAST**  
Efficient Service



Fast efficient service and dispatch when you order before 1pm your goods are shipped the same day.

Phone: 03 312 5809  
Freephone: 0800 966 333  
Fax: 03 312 5840  
Freefax: 0800 961 333  
Email: [sales@amuriproductions.co.nz](mailto:sales@amuriproductions.co.nz)  
Website: [www.amuriproductions.co.nz](http://www.amuriproductions.co.nz)

**DELIVERY ADDRESS:**  
2A South Belt, Rangiora

**POSTAL ADDRESS:**  
PO Box 22  
Rangiora 7440



## ***DELIVERY OPTIONS***



***Wherever you are, we will Deliver.  
Order before 1pm and we will  
dispatch the same day!***

***Delivery just takes 2-3 working days  
nationwide.***

***No minimum orders apply.***

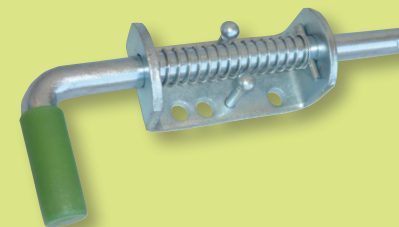


# Index →

Order form is included  
in centre fold

**The Original Jailer  
Latch**

**6 - 11**



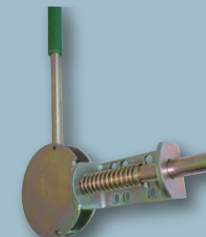
**Lockable Latches  
and Keeps**

**12 - 14**



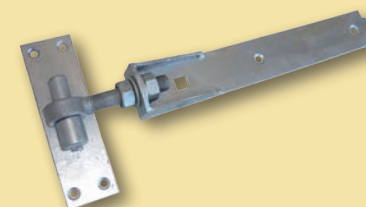
**Lever Action Latches**

**15 - 16**



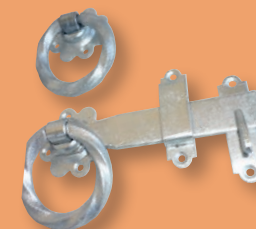
**Hinges and Pins**

**17 - 29**



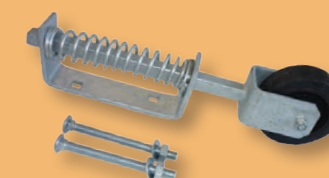
**Lifestyle Latches  
and Keeps**

**30 - 31**



**Industrial and  
Miscellaneous  
Hardware**

**32 - 39**



## THE ORIGINAL JAILER LATCH

### 10mm Stubby Slam Latch



**CODE:** WSL-10

**MATERIAL:** Mild Steel

**FINISH:** Zinc Plated

**PIN DIAMETER:** 10mm

**BODY SIZE:** 60mm L x 40mm W x 2.5mm thick

**MOUNTING HOLES:** 4 at 6.5mm diameter

**OVERALL LENGTH:** 128mm

**THROW:** 24mm

**MOUNT OPTIONS:** Bolt, Weld, Screw

**OTHER FEATURES:** Luminous handle

**CARTON QTY:** x 28

**PACKED QTY:** x 1

### 12mm Stainless Steel Slam Latch



**CODE:** WST-12SS

**MATERIAL:** Stainless Steel

**FINISH:** Self Colour

**PIN DIAMETER:** 12mm

**BODY SIZE:** 70mm L x 40mm W x 3mm thick

**MOUNTING HOLES:** 4 at 6.5mm diameter

**OVERALL LENGTH:** 150mm

**THROW:** 28mm

**MOUNT OPTIONS:** Bolt, Weld, Screw

**OTHER FEATURES:** Excellent for food and health industry, coastal and marine use.

**CARTON QTY:** x 21

**PACKED QTY:** x 1

### 12mm Stubby Slam Latch



**CODE:** WST-12

**MATERIAL:** Mild Steel

**FINISH:** Zinc Plated

**PIN DIAMETER:** 12mm

**BODY SIZE:** 75mm L x 40mm W x 5mm thick

**MOUNTING HOLES:** 4 at 6.5mm diameter

**OVERALL LENGTH:** 150mm

**THROW:** 28mm

**MOUNT OPTIONS:** Bolt, Weld, Screw, WCL-08 Clamp

**OTHER FEATURES:** Luminous handle

**CARTON QTY:** x 21

**PACKED QTY:** x 1

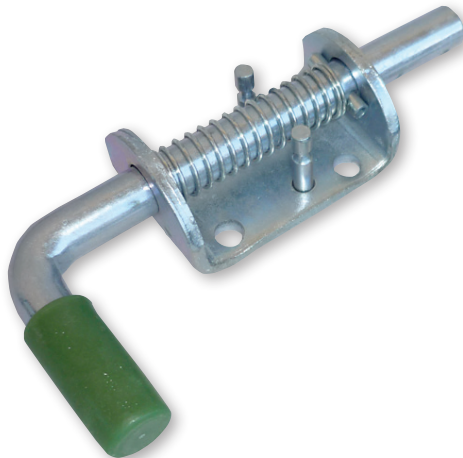


## 12mm Slam Latch



**CODE:** WSL-12  
**MATERIAL:** Mild Steel  
**FINISH:** Zinc Plated  
**PIN DIAMETER:** 12mm  
**BODY SIZE:** 119mm L x 40mm W x 5mm thick  
**MOUNTING HOLES:** 4 at 6.5mm diameter  
**OVERALL LENGTH:** 212mm  
**THROW:** 49mm  
**MOUNT OPTIONS:** Bolt, Weld, Screw, WCL-08 Clamp  
**OTHER FEATURES:** Luminous handle  
**CARTON QTY:** x 14  
**PACKED QTY:** x 1

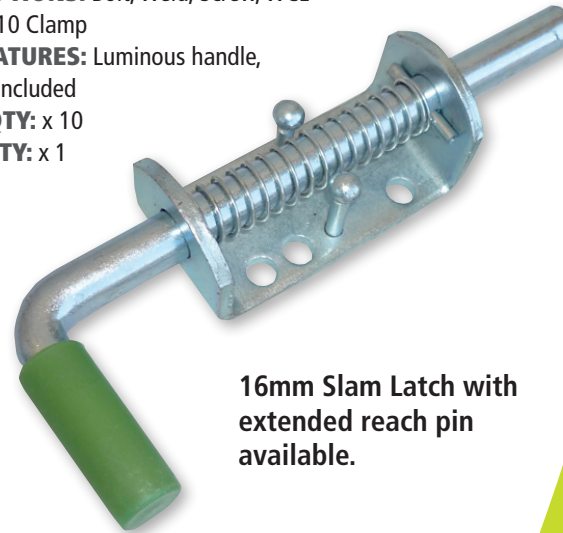
## 14mm Stubby Slam Latch



**CODE:** WST-14  
**MATERIAL:** Mild Steel  
**FINISH:** Zinc Plated  
**PIN DIAMETER:** 14mm  
**BODY SIZE:** 75mm L x 45mm W x 5mm thick  
**MOUNTING HOLES:** 4 at 8.5mm diameter  
**OVERALL LENGTH:** 165mm  
**THROW:** 30mm  
**MOUNT OPTIONS:** Bolt, Weld, Screw, WCL-08 Clamp  
**OTHER FEATURES:** Luminous handle  
**CARTON QTY:** x 21  
**PACKED QTY:** x 1

## 16mm Slam Latch with Striker Plate

**CODE:** WSL-16  
**MATERIAL:** Mild Steel  
**FINISH:** Zinc Plated  
**PIN DIAMETER:** 16mm  
**BODY SIZE:** 105mm L x 50mm W x 5mm thick  
**MOUNTING HOLES:** 6 at 10mm diameter  
**OVERALL LENGTH:** 232mm  
**THROW:** 48mm  
**MOUNT OPTIONS:** Bolt, Weld, Screw, WCL-08 or WCL-10 Clamp  
**OTHER FEATURES:** Luminous handle, strike plate included  
**CARTON QTY:** x 10  
**PACKED QTY:** x 1



16mm Slam Latch with extended reach pin available.



THE ORIGINAL JAILER LATCH



## THE ORIGINAL JAILER LATCH

### 19mm Slam Latch with Striker Plate



**CODE:** WSL-19  
**MATERIAL:** Mild Steel  
**FINISH:** Zinc Plated  
**PIN DIAMETER:** 19mm  
**BODY SIZE:** 136mm L x 65mm W  
x 5mm thick  
**MOUNTING HOLES:** 4 at 10mm diameter  
**OVERALL LENGTH:** 320mm  
**THROW:** 65mm  
**MOUNT OPTIONS:** Bolt, Weld, Screw, WCL-10  
Clamp  
**OTHER FEATURES:** Luminous handle, loop to  
attach remote pull chord, strike plate included  
**CARTON QTY:** x 6  
**PACKED QTY:** x 1

### 22mm Slam Latch with Striker Plate



22mm Slam Latch with  
extended reach pin available.

**CODE:** WSL-22  
**MATERIAL:** Mild Steel  
**FINISH:** Zinc Plated  
**PIN DIAMETER:** 22mm clamp plate  
**BODY SIZE:** 152mm L x 75mm W  
x 6mm thick  
**MOUNTING HOLES:** 4 at 10mm  
**OVERALL LENGTH:** 360mm  
**THROW:** 71mm  
**MOUNT OPTIONS:** Bolt, Weld, Screw, WCL-10  
or WCL-12 clamp  
**OTHER FEATURES:** Luminous handle, loop to  
attach remote pull chord, strike plate included  
**CARTON QTY:** x 4  
**PACKED QTY:** x 1



## 25mm Slam Latch with Striker Plate



### Striker Plates

**CODE:** WSP-14, WSP-16, WSP-19  
WSP-22, WSP-25  
**MATERIAL:** Mild Steel  
**FINISH:** Zinc Plated  
**SLOT SIZE:** Corresponds to code number eg  
WSP-14 fits up to 14mm diameter latch pin.  
**MOUNTING HOLES:** x4  
**OVERALL LENGTH:** varies  
**MOUNT OPTIONS:** Nail, Screw  
**OTHER FEATURES:** Can be mounted onto  
round or square posts  
**CARTON QTY:** x 10  
**PACKED QTY:** x 1

**CODE:** WSL-25  
**MATERIAL:** Mild Steel  
**FINISH:** Zinc Plated  
**PIN DIAMETER:** 25mm  
**BODY SIZE:** 167mm L x 79mm W  
x 7mm thick  
**MOUNTING HOLES:** 4 at 12mm diameter  
**OVERALL LENGTH:** 510mm  
**THROW:** 82mm  
**MOUNT OPTIONS:** Bolt, Weld, Screw,  
WCL-12 clamp  
**OTHER FEATURES:** Luminous handle, loop  
to attach remote pull, strike plate included  
**CARTON QTY:** x 4  
**PACKED QTY:** x 1



### Pipe Gate Clamp Fixers

**CODE:** WCL-08, WCL-10, WCL-12  
**MATERIAL:** Mild Steel  
**FINISH:** Zinc Plated  
**TO FIT:** WCL-08 and WCL-10 standard pipe up to  
36mm outside diameter.  
WCL-12 heavy pipe up to 41mm outside  
diameter.  
**MOUNT OPTIONS:** Self Clamping, includes nuts.  
**OTHER FEATURES:** For effective clamping of  
Jailer Slam Latches to pipe gates.  
**CARTON QTY:** x 10  
**PACKED QTY:** x 2



THE ORIGINAL JAILER LATCH





## THE ORIGINAL JAILER LATCH

### SUGGESTED APPLICATIONS



**GARDEN SHEDS & DANGEROUS GOODS STORES**



**PEDESTRIAN GATES**



**FARM GATES**



**DOG KENNELS**



**TRAILER TAIL GATES**



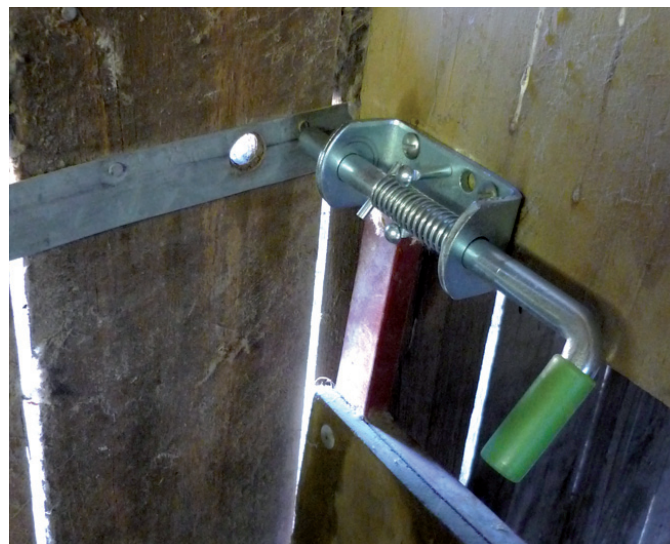
**TILT & ROLLER DOORS**



## SUGGESTED APPLICATIONS



**ADJUSTABLE RAMPS**



**DEER YARDS**



**WOOL SHEDS & SHEEP YARDS**



**SELECTION OF SIZES FOR EVERY APPLICATION**



**CATTLE YARDS**



**GATE LATCHES**  
**THE ORIGINAL JAILER LATCH**



\* Patented Design

## LOCKABLE LATCHES AND KEEPS

### 12mm Lockable Slam Latch



**CODE:** 110-2122

**MATERIAL:** Mild Steel

**FINISH:** Zinc Plated

**PIN DIAMETER:** 12mm

**BODY SIZE:** 109mm L x 40mm W  
x 4.5mm thick

**MOUNTING HOLES:** 4 at 9mm diameter

**OVERALL LENGTH:** 217mm

**THROW:** 43mm

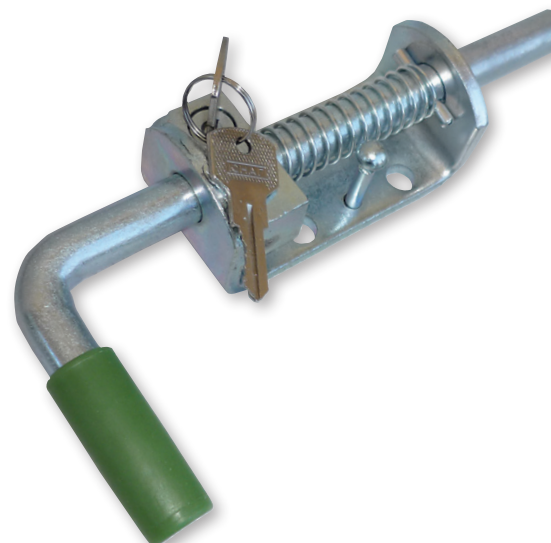
**MOUNT OPTIONS:** Bolt, Weld, Screw, WCL-08  
Clamp

**OTHER FEATURES:** Luminous handle, 2 keys  
supplied, lockable in closed position

**CARTON QTY:** x 14

**PACKED QTY:** x 1

### 16mm Lockable Slam Latch



**CODE:** 110-2162

**MATERIAL:** Mild Steel

**FINISH:** Zinc Plated

**PIN DIAMETER:** 16mm

**BODY SIZE:** 104mm L x 50mm W  
x 5mm thick

**MOUNTING HOLES:** 4 at 10mm diameter

**OVERALL LENGTH:** 235mm

**THROW:** 41mm

**MOUNT OPTIONS:** Bolt, Weld, Screw, WCL-10  
Clamp

**OTHER FEATURES:** Luminous handle, 2 keys  
supplied, lockable in closed position

**CARTON QTY:** x 10

**PACKED QTY:** x 1



## Auto Easy Close Catch



**CODE:** 601-0011  
**MATERIAL:** Mild Steel  
**FINISH:** Galvanized  
**PIN DIAMETER:** 9mm diameter x 70mm long  
**BODY SIZE:** 45mm H x 42mm W  
 x 50mm projection  
**MOUNTING HOLES:** 6 at 4.5mm diameter  
**MOUNT OPTIONS:** Bolt, Weld, Screw, Rivet  
**OTHER FEATURES:** Includes Pin and Screws  
**CARTON QTY:** x 10  
**PACKED QTY:** x 1



## Auto Gate Catch



**CODE:** 601-0012  
**MATERIAL:** Mild Steel  
**FINISH:** Zinc Plated  
**PIN DIAMETER:** 9mm diameter x 70mm long  
**BODY SIZE:** 45mm H x 42mm W  
 x 50mm projection  
**MOUNTING HOLES:** 6 at 4.5mm diameter  
**MOUNT OPTIONS:** Bolt, Weld, Screw, Rivet  
**OTHER FEATURES:** Includes Pin and Screws  
**CARTON QTY:** x 10  
**PACKED QTY:** x 1





## LOCKABLE LATCHES AND KEEPS

### Self Locking Gate Catches



**CODE:** 063-0001

**MATERIAL:** Mild Steel

**FINISH:** Galvanized

**BODY SIZE:** 180mm x 30mm x 120mm  
projection

**MOUNTING HOLES:** 2 at 13mm diameter

**OVERALL LENGTH:** 180mm

**THROW:** Opening 26mm H

**MOUNT OPTIONS:** Bolt, Weld, Screw

**OTHER FEATURES:** Latch pin not included,  
can be padlocked

**CARTON QTY:** x 5

**PACKED QTY:** x 1

### Hunting Type Locking Gate Catch



**CODE:** 064-0001

**MATERIAL:** Mild Steel

**FINISH:** Galvanized

**BODY SIZE:** 180mm x 30mm x 120mm  
projection

**MOUNTING HOLES:** 2 at 13mm diameter

**OVERALL LENGTH:** 430mm

**THROW:** Opening 12mm height

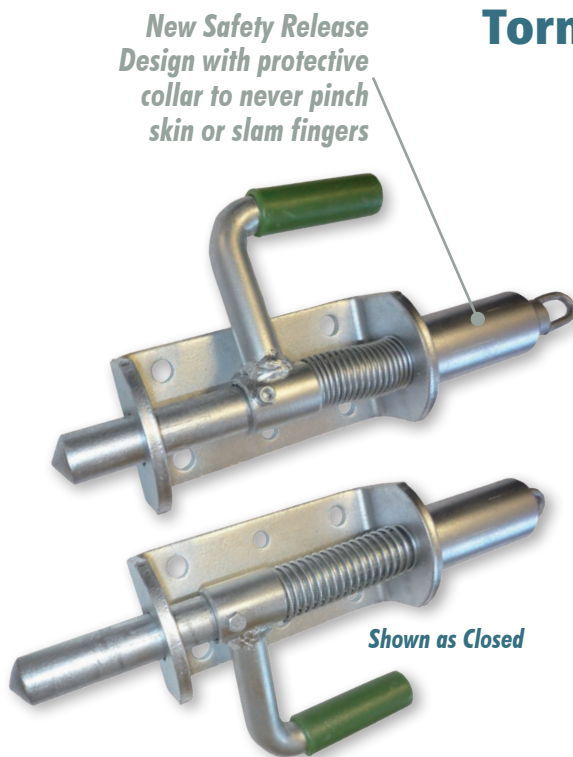
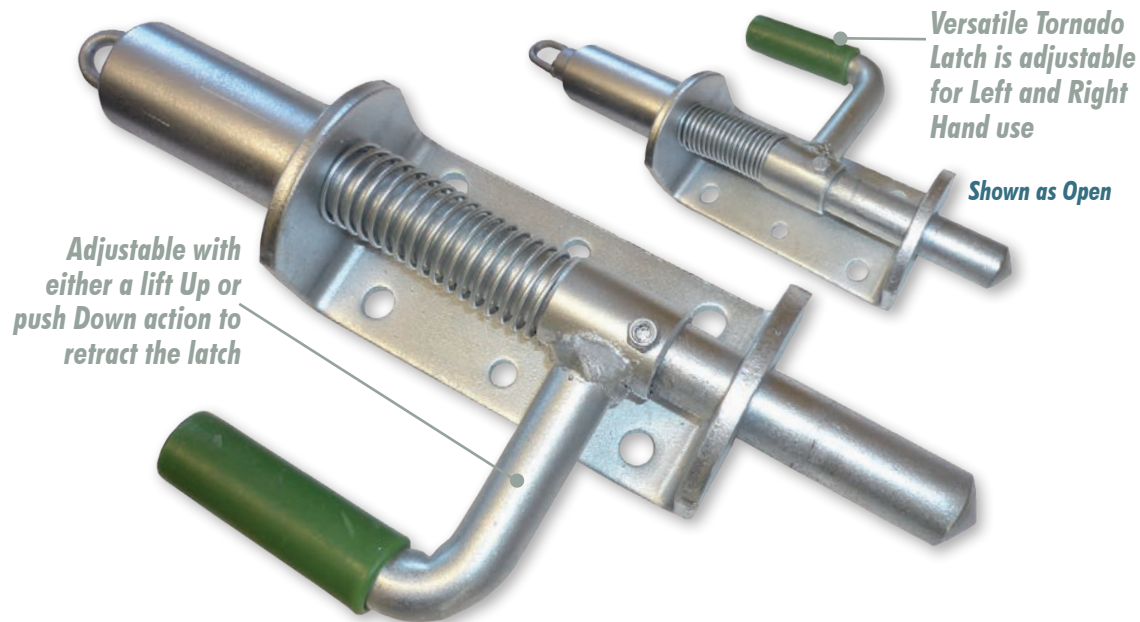
**MOUNT OPTIONS:** Bolt, Weld, Screws

**OTHER FEATURES:** Latch pin not included,  
can be padlocked

**CARTON QTY:** x 5

**PACKED QTY:** x 1





## Tornado Latch - Twist Action

**CODE:** TTL-25

**MATERIAL:** Mild Steel

**FINISH:** Zinc Plated

**PIN DIAMETER:** 25mm

**BODY SIZE:** 240mm L x 80mm H  
x 7mm plate

**MOUNTING HOLES:** 6 at 12mm diameter

**OVERALL LENGTH:** 360mm

**THROW:** 33mm

**MOUNT OPTIONS:** Bolt, Weld, Screw,  
WCL-12 Clamp

**OTHER FEATURES:** Left or Right hand adjustable, multi directional retract/release adjustable, unique twist action mechanism. Heavy duty slammable, safe no-pinch design, luminous handle, loop to attach remote pull chord. Will hold in fully open position.

**CARTON QTY:** x 4

**PACKED QTY:** x 1

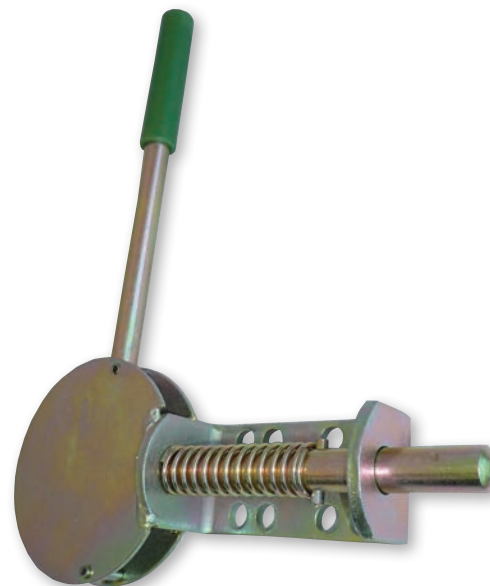


LEVER ACTION LATCHES



## LEVER ACTION LATCHES

### Dalton Double Action Latch



**CODE:** DAC-16  
**MATERIAL:** Mild Steel  
**FINISH:** Zinc Plated  
**PIN DIAMETER:** 16mm  
**BODY SIZE:** 200mm L x 100mm H  
x 5mm plate  
**MOUNTING HOLES:** 8 at 10mm diameter  
**OVERALL LENGTH:** Handle 310mm  
**THROW:** 26mm  
**MOUNT OPTIONS:** Bolt, Weld, Screw,  
WCL-08 or WCL-10 Clamp  
**OTHER FEATURES:** Left or right hand adjustable.  
Luminous handle  
**CARTON QTY:** x 4  
**PACKED QTY:** x 1

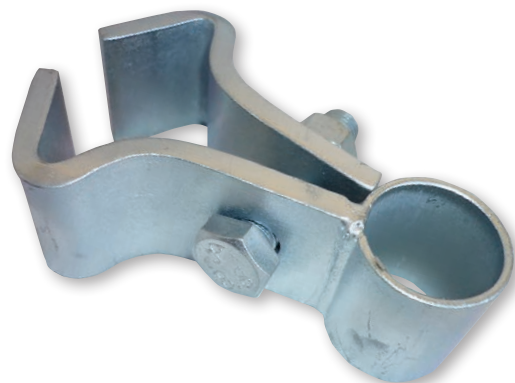
### Morton Slam Latch - (Alton Mk II)



**CODE:** DLT-16  
**MATERIAL:** Mild Steel  
**FINISH:** Zinc Plated  
**PIN DIAMETER:** 16mm  
**BODY SIZE:** 120mm H x 145mm W  
x 5mm thick, handle diameter 14mm  
**MOUNTING HOLES:** 4 at 9mm diameter  
**OVERALL LENGTH:** Handle 330mm  
**THROW:** 30mm  
**MOUNT OPTIONS:** Bolt, Weld, Screw,  
WCL-08 Clamp  
**OTHER FEATURES:** Left or right hand  
adjustment, luminous handle  
**CARTON QTY:** x 5  
**PACKED QTY:** x 1

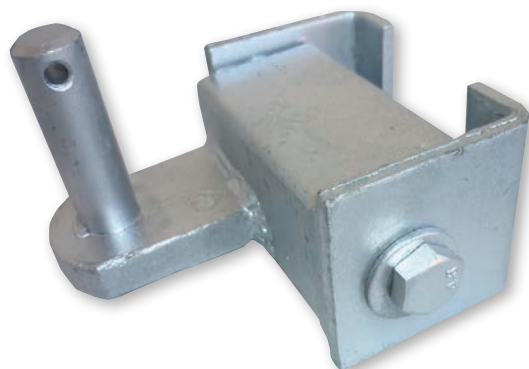


## RSJ Gate Hangers for Metal Gate



**CODE:** 052-0352  
**MATERIAL:** Mild Steel  
**FINISH:** Zinc Plated  
**PIN DIAMETER:** Accepts up to 36mm diameter  
**BODY SIZE:** 145mm x 48mm x 7mm plate  
**MOUNTING HOLES:** Adjustable bracket  
**OVERALL LENGTH:** 145mm  
**MOUNT OPTIONS:** Self clamps  
**OTHER FEATURES:** Includes clamping bolt  
**CARTON QTY:** x 6  
**PACKED QTY:** x 1

## ADJ RSJ Gate Hangers for Metal Gates



**CODE:** 095-0001  
**MATERIAL:** Mild Steel  
**FINISH:** Galvanized  
**PIN DIAMETER:** 19mm diameter x 65mm long  
**BODY SIZE:** 110mm W x 68mm H x 70mm Deep  
**OVERALL LENGTH:** 140mm  
**MOUNT OPTIONS:** Self clamps  
**OTHER FEATURES:** Adjustable to fit 100mm to 180mm post  
**CARTON QTY:** x 6  
**PACKED QTY:** x 1



## HINGES AND PINS

### Double Strap Hinge for 2" Gate



**MATERIAL:** Mild Steel

**FINISH:** Galvanized **CODE** 087-4501.

Black epoxy **CODE** 087-4503

**PIN DIAMETER:** Accept 19mm pin

**BODY SIZE:** 465mm L x 49mm H x 66mm W  
x 5mm thick

**MOUNTING HOLES:** 6 at 11mm square

**OVERALL LENGTH:** 465mm

**MOUNT OPTIONS:** Bolt, Screw

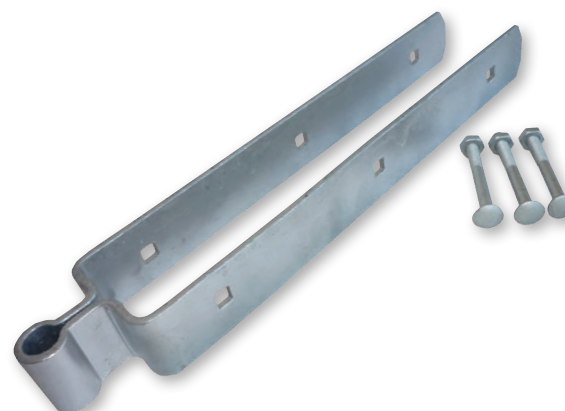
**OTHER FEATURES:** Internal width 55mm.

Bolts included

**CARTON QTY:** x 10

**PACKED QTY:** x 1

### Double Strap Hinge for 3" Gate



**CODE:** 053-4501

**MATERIAL:** Mild Steel

**FINISH:** Galvanized

**PIN DIAMETER:** Accept 19mm pin

**BODY SIZE:** 465mm L x 50mm H x 85mm W  
x 5mm thick

**MOUNTING HOLES:** 6 at 11mm square

**OVERALL LENGTH:** 465mm

**MOUNT OPTIONS:** Bolt, Screw

**OTHER FEATURES:** Internal width 74mm.

Bolts included

**CARTON QTY:** x 10

**PACKED QTY:** x 1 or / carton



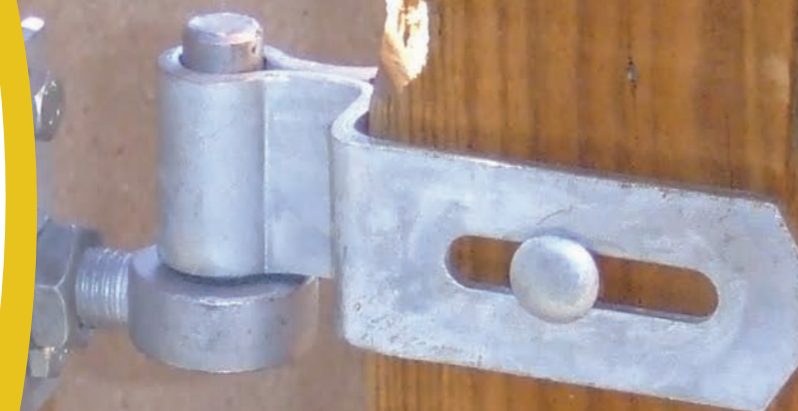
## Slotted Short Strap Hinge for 3" gate



**MATERIAL:** Mild Steel  
**FINISH:** Galvanized. **CODE:** 057-1251  
 Black epoxy **CODE:** 057-1253  
**PIN DIAMETER:** Accepts 19mm pins  
**BODY SIZE:** 170mm L x 50mm H x 6mm thick  
**MOUNTING HOLES:** 2 slots 12mm x 60mm  
**OVERALL LENGTH:** 170mm  
**MOUNT OPTIONS:** Bolt supplied  
**OTHER FEATURES:** Internal width 75mm  
**CARTON QTY:** x 10  
**PACKED QTY:** x 1

## Adjustable Hooks on Plates 19mm

**CODE:** 042-5191  
**MATERIAL:** Mild Steel  
**FINISH:** Galvanized  
**PIN DIAMETER:** 19mm  
**BODY SIZE:** 100mm x 100mm, 5mm plate  
**MOUNTING HOLES:** 4 at 11mm diameter  
**OVERALL LENGTH:** Up to maximum 135mm  
**MOUNT OPTIONS:** Bolt, Weld, Screw  
**CARTON QTY:** x 10  
**PACKED QTY:** x 1



## HINGES AND PINS

### Gate Hangers to Bolt

**CODE:** 043-3501

**MATERIAL:** Mild Steel

**FINISH:** Galvanized

**PIN DIAMETER:** 19mm

**BODY SIZE:** 355mm long x 75mm x 19mm diameter

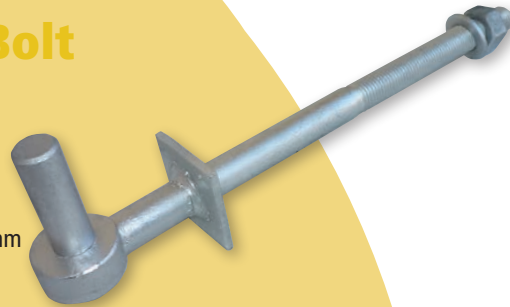
**OVERALL LENGTH:** 355mm

**MOUNT OPTIONS:** Bolts through timber post

**OTHER FEATURES:** Fixed collar plate

**CARTON QTY:** x 20

**PACKED QTY:** x 1



### Gate Hangers to Bolt - Black

**CODE:** 043-3503

**PRODUCT FEATURES:** Fixed collar plate, ideal with our black hinges and straps.

**MATERIAL:** Mild Steel

**FINISH:** Black

**PIN DIAMETER:** 19mm Ø x 55mm

**BODY SIZE:** 355mm x 19mm Ø; Square collar plate: 50x50mm

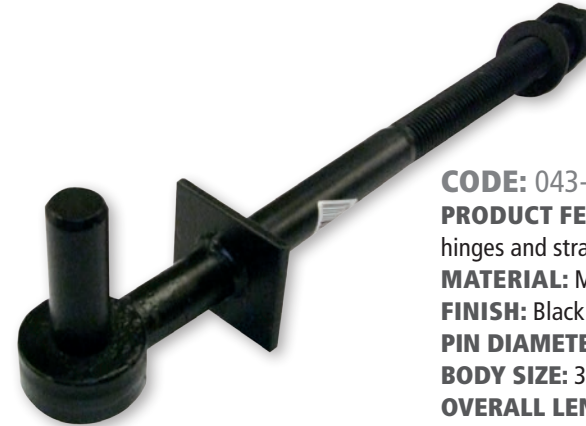
**OVERALL LENGTH:** 355mm

**PROJECTION:** From post to centre of gudgeon pin: 72mm

**MOUNT OPTIONS:** Bolts through timber or metal post

**CARTON QTY:** x 20

**PACKED QTY:** x 2



### Hooks to Bolt 19mm Pin Square Shank

**CODE:** 040-3251

**MATERIAL:** Mild Steel

**FINISH:** Galvanized

**PIN DIAMETER:** 19mm

**BODY SIZE:** 250mm long shank

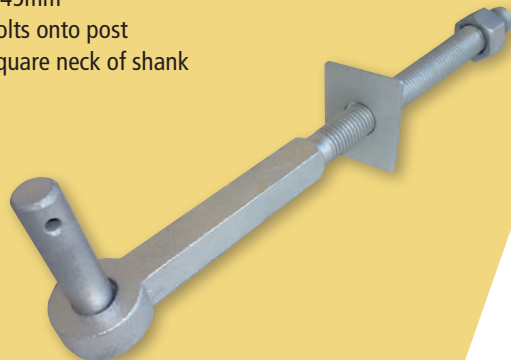
**OVERALL LENGTH:** 345mm

**MOUNT OPTIONS:** Bolts onto post

**OTHER FEATURES:** Square neck of shank grabs into hole

**CARTON QTY:** x 10

**PACKED QTY:** x 1



### Hooks to Screw - 16mm Pin

**CODE:** 085-1501

**PRODUCT FEATURES:** Simple and effective Gudgeon

**MATERIAL:** Mild Steel

**FINISH:** Galvanised

**PIN DIAMETER:** 16mm Ø

**BODY SIZE:** Screw thread length 130mm

**MOUNTING HOLES:** Needs 14mm hole drilled

**OVERALL LENGTH:** 165mm

**MOUNT OPTIONS:** Screw into wooden post

**CARTON QTY:** x 25

**PACKED QTY:** x 1



### Hooks to Screw - 19mm Pin

**CODE:** 085-2251

**PRODUCT FEATURES:** Has Gudgeon pin hole. Simple and effective Gudgeon.

**MATERIAL:** Mild Steel

**FINISH:** Galvanised

**PIN DIAMETER:** 19mm Ø

**BODY SIZE:** Screw thread length 190mm

**MOUNTING HOLES:** Needs 19mm hole drilled

**OVERALL LENGTH:** 230mm

**MOUNT OPTIONS:** Screw into wooden post

**CARTON QTY:** x 25

**PACKED QTY:** x 1



## Screw Gudgeon

**CODE:** SG12100

**DESCRIPTION:** 12 x 100 Screw Gudgeon

**CODE:** SG16105

**DESCRIPTION:** 16 x 105 Screw Gudgeon

**CODE:** SG16140

**DESCRIPTION:** 16 x 140 Screw Gudgeon

**CODE:** SG20100

**DESCRIPTION:** 20 x 100 Screw Gudgeon

**CODE:** SG20100LP

**DESCRIPTION:** 20 x 100 Screw Gudgeon - Long Pin

**CODE:** SG20150

**DESCRIPTION:** 20 x 150 Screw Gudgeon

**CODE:** SG20150LP

**DESCRIPTION:** 20 x 150 Screw Gudgeon - Long Pin

**CODE:** SG20200

**DESCRIPTION:** 20 x 200 Screw Gudgeon

**CODE:** SG20200LP

**DESCRIPTION:** 20 x 200 Screw Gudgeon - Long Pin



## Drive Gudgeon

**CODE:** DG16150LPB

**DESCRIPTION:** 16 x 150 Drive Gudgeon - Long Pin BARB

**CODE:** DG20200LP

**DESCRIPTION:** 20 x 200 Drive Gudgeon - Long Pin

**CODE:** DG20200LPB

**DESCRIPTION:** 20 x 200 Drive Gudgeon - Long Pin BARB



## Hinge Strap

**CODE:** HS12150

**DESCRIPTION:** 12 x 150 Hinge Strap

**CODE:** HS12225

**DESCRIPTION:** 12 x 225 Hinge Strap

**CODE:** HS12300

**DESCRIPTION:** 12 x 300 Hinge Strap

**CODE:** HS16150

**DESCRIPTION:** 16 x 150 Hinge Strap

**CODE:** HS16225

**DESCRIPTION:** 16 x 225 Hinge Strap

**CODE:** HS16300

**DESCRIPTION:** 16 x 300 Hinge Strap

**CODE:** HS20300

**DESCRIPTION:** 20 x 300 Hinge Strap

**CODE:** HS20375

**DESCRIPTION:** 20 x 375 Hinge Strap

**CODE:** HS20450

**DESCRIPTION:** 20 x 450 Hinge Strap

**CODE:** HS20600

**DESCRIPTION:** 20 x 600 Hinge Strap



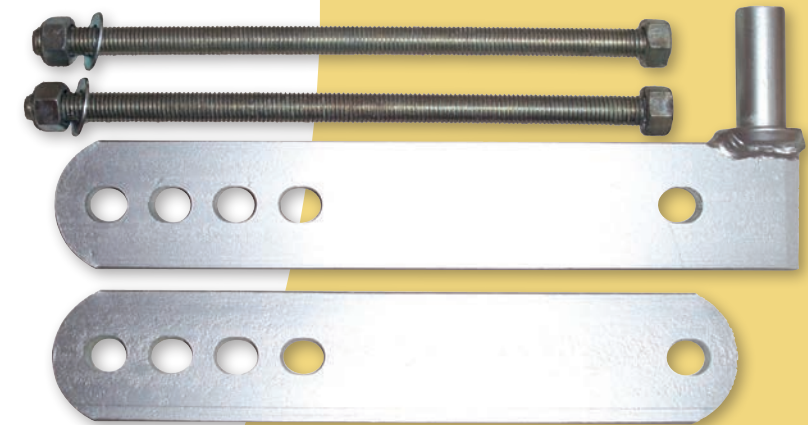
## Concrete Post Sets

**CODE:** CPS20125-200

**DESCRIPTION:** Concrete Post Set - Single Way PAIR

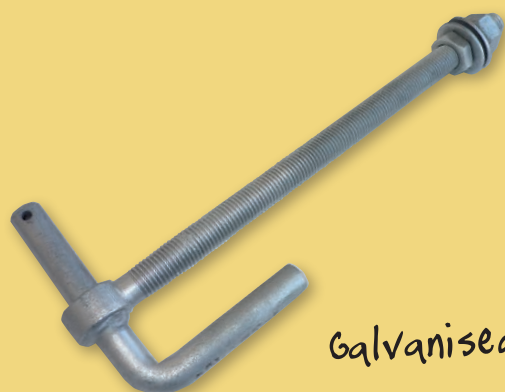
**CODE:** CPS20125-200

**DESCRIPTION:** Concrete Post Set - Double Way PAIR



## HINGES AND PINS

### Lock Thru Hooks 19mm Pin



Galvanised

**CODE:** 084-3501  
**MATERIAL:** Mild Steel  
**FINISH:** Galvanized  
**PIN DIAMETER:** 19mm  
**BODY SIZE:** 380mm L x 135mm H  
**OVERALL LENGTH:** 380mm  
**MOUNT OPTIONS:** Bolts through timber post  
**OTHER FEATURES:**  
**CARTON QTY:** x 10  
**PACKED QTY:** x 1

### Lock Through Post Gudgeon



**CODE:** LTPG16250  
**DESCRIPTION:** 16 x 250 Lock Through Post Gudgeon  
**CODE:** LTPG20275  
**DESCRIPTION:** 20 x 275 Lock Through Post Gudgeon  
**CODE:** LTPG20275LP  
**DESCRIPTION:** 20 x 275 Lock Through Post Gudgeon - Long Pin  
**CODE:** LTPG20350  
**DESCRIPTION:** 20 x 350 Lock Through Post Gudgeon  
**CODE:** LTPG20350LP  
**DESCRIPTION:** 20 x 350 Lock Through Post Gudgeon - Long Pin  
**CODE:** LTPG20425  
**DESCRIPTION:** 20 x 425 Lock Through Post Gudgeon  
**CODE:** LTPG20425LP  
**DESCRIPTION:** 20 x 425 Lock Through Post Gudgeon - Long Pin

### Through Post Gudgeon



**CODE:** TPG12190  
**DESCRIPTION:** 12 x 190 Through Post Gudgeon  
**CODE:** TPG16250  
**DESCRIPTION:** 16 x 250 Through Post Gudgeon  
**CODE:** TPG20275  
**DESCRIPTION:** 20 x 275 Through Post Gudgeon  
**CODE:** TPG20275LP  
**DESCRIPTION:** 20 x 275 Through Post Gudgeon - Long Pin  
**CODE:** TPG20350  
**DESCRIPTION:** 20 x 350 Through Post Gudgeon  
**CODE:** TPG20350LP  
**DESCRIPTION:** 20 x 350 Through Post Gudgeon - Long Pin  
**CODE:** TPG20425  
**DESCRIPTION:** 20 x 425 Through Post Gudgeon  
**CODE:** TPG20425LP  
**DESCRIPTION:** 20 x 425 Through Post Gudgeon - Long Pin

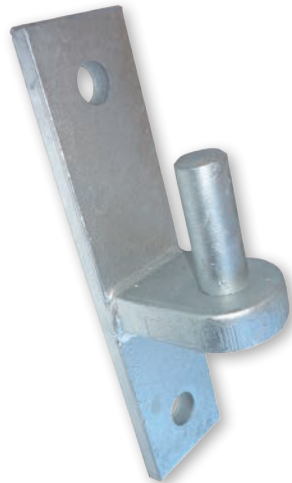
### Square Shank Gudgeon



**CODE:** SSG20275  
**DESCRIPTION:** 20 x 275 Square Shank Gudgeon  
**CODE:** SSG20275LP  
**DESCRIPTION:** 20 x 275 Square Shank Gudgeon - Long Pin  
**CODE:** SSG20350  
**DESCRIPTION:** 20 x 350 Square Shank Gudgeon  
**CODE:** SSG20350LP  
**DESCRIPTION:** 20 x 350 Square Shank Gudgeon - Long Pin



## Hooks on Narrow Plates



**CODE:** 045-0191  
**MATERIAL:** Mild Steel  
**FINISH:** Galvanized  
**PIN DIAMETER:** 19mm  
**BODY SIZE:** 205mm x 50mm  
 x 10mm thick  
**MOUNTING HOLES:** 2 at 16mm diameter  
**OVERALL LENGTH:** 205mm  
**MOUNT OPTIONS:** Bolt, Weld, Screw  
**OTHER FEATURES:** Projection 72mm  
**CARTON QTY:** x 10  
**PACKED QTY:** x 1

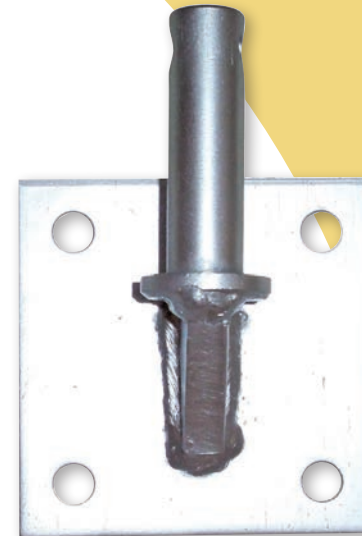
## Adjustable Gate Eyes with 2 Nuts



**CODE:** 049-4162  
**CODE:** 049-6162  
**MATERIAL:** Mild Steel  
**FINISH:** Bright Zinc Plated  
**PIN DIAMETER:** Accepts 16mm diameter  
**049-4162 BODY SIZE:** Bolt size 75mm x 13mm  
 diameter  
**049-6162 BODY SIZE:** Bolt size 115mm x  
 13mm diameter  
**049-4162 OVERALL LENGTH:** 110mm  
**049-6162 OVERALL LENGTH:** 162mm  
**OTHER FEATURES:** Includes 2 x nuts  
**CARTON QTY:** x 10  
**PACKED QTY:** x 2



## Plate Gudgeon



**CODE:** PG1640  
**DESCRIPTION:** 16 x 40 Plate Gudgeon  
**CODE:** PG2070  
**DESCRIPTION:** 20 x 47 Plate Gudgeon

## Adjustable Hooks on Plates 19mm

**CODE:** 042-5191  
**MATERIAL:** Mild Steel  
**FINISH:** Galvanized  
**PIN DIAMETER:** 19mm  
**BODY SIZE:** 100mm x 100mm, 5mm plate  
**MOUNTING HOLES:** 4 at 11mm diameter  
**OVERALL LENGTH:** Up to maximum 135mm  
**MOUNT OPTIONS:** Bolt, Weld, Screw  
**CARTON QTY:** x 10  
**PACKED QTY:** x 1



## HINGES AND PINS

### Flip Over Latch for 3" Gates



**CODE:** 061-3501  
**MATERIAL:** Mild Steel  
**FINISH:** Galvanized  
**PIN DIAMETER:**  
**BODY SIZE:** 362mm L x 95mm x 60mm  
**MOUNTING HOLES:** 2 at 10mm diameter  
**OVERALL LENGTH:** 362mm  
**THROW:** 345mm  
**MOUNT OPTIONS:** Bolt  
**OTHER FEATURES:** Has lifting handle  
**CARTON QTY:** x 10  
**PACKED QTY:** x 1

### Throw Over Latch for 4" Gate - with Keeper - Black (Padlockable)

**CODE:** 061-4543  
**PRODUCT FEATURES:** With keeper so can be padlocked closed. Handle makes easy to lift. Supplied with bolt.  
**MATERIAL:** Mild Steel  
**FINISH:** Black Powder Coated  
**BODY SIZE:** 455mm L x 50mm x 124mm W  
**MOUNTING HOLES:** 10mm Ø  
**OVERALL LENGTH:** 455mm  
**THROW:** 430mm  
**MOUNT OPTIONS:** Bolt (supplied)  
**CARTON QTY:** x 10  
**PACKED QTY:** x 1



### Throw Over Latch for 4" Gate - with Keeper - Galvanised (Padlockable)

**CODE:** 061-4541  
**PRODUCT FEATURES:** With keeper so can be padlocked closed. Handle makes easy to lift. Supplied with bolt.  
**MATERIAL:** Mild Steel  
**FINISH:** Galvanised  
**BODY SIZE:** 455mm L x 50mm x 124mm W  
**MOUNTING HOLES:** 10mm Ø  
**OVERALL LENGTH:** 455mm  
**THROW:** 430mm  
**MOUNT OPTIONS:** Bolt (supplied)  
**CARTON QTY:** x 10  
**PACKED QTY:** x 1





## Adjustable Hinge/Strap & Hook Set 300mm

**CODE:** 008-3501

**MATERIAL:** Mild Steel

**FINISH:** Galvanized

**PIN DIAMETER:** 16mm

**BODY SIZE:** Strap 335mm x 50mm x 5mm thick, plate 165mm x 50mm x 5mm

**MOUNTING HOLES:** 7mm

**OVERALL LENGTH:** Extendable from 405mm to 440mm

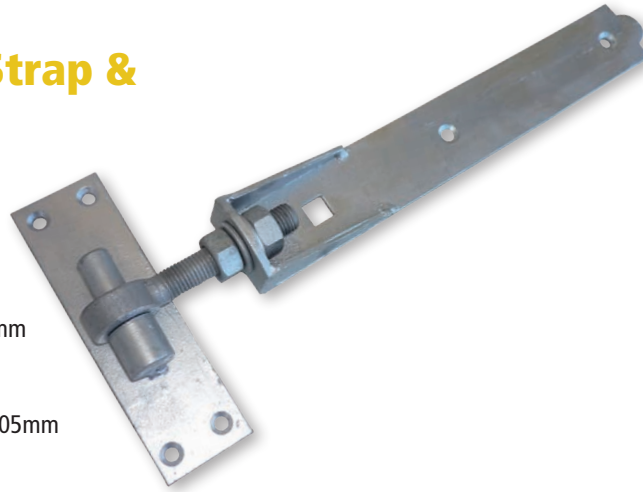
**MOUNT OPTIONS:** Bolt, Weld, Screw

**OTHER FEATURES:** Pin projection 35mm

Can be flush face mounted

**CARTON QTY:** x 5

**PACKED QTY:** x 1



## Adjustable Hinge/Strap & Hook Set 600mm

**CODE:** 008-6001

**PRODUCT FEATURES:** Face mounting gudgeon plate and hinge strap, adjustable with gate fixed.

**MATERIAL:** Mild Steel

**FINISH:** Galvanised

**PIN DIAMETER:** 19mm Ø

**BODY SIZE:** Hinge strap: 575mm L x 57mm W x 5mm thick  
Gudgeon plate: 165mm L x 50mm W x 5mm thick

**MOUNTING HOLES:** 6mm Ø, 8mm Ø

**OVERALL LENGTH:** Extendable from 645mm to 705mm

**PROJECTION:** Post to centre of gudgeon pin 30mm

**MOUNT OPTIONS:** Screw, Bolt, Weld

**CARTON QTY:** x 10

**PACKED QTY:** x 1 set (gudgeon + strap)

## Adjustable Hinge/Strap & Hook Set 450mm

**CODE:** 008-4501

**PRODUCT FEATURES:** Face mounting gudgeon plate and hinge strap, adjustable with gate fixed.

**MATERIAL:** Mild Steel

**FINISH:** Galvanised

**PIN DIAMETER:** 16mm Ø

**BODY SIZE:** Hinge strap: 430mm L x 50mm W x 5mm thick

Gudgeon plate: 165mm L x 50mm W x 5mm thick

**MOUNTING HOLES:** 6mm Ø, 8mm Ø

**OVERALL LENGTH:** Extendable from 500mm to 545mm

**PROJECTION:** Post to centre of gudgeon pin 28mm

**MOUNT OPTIONS:** Screw, Bolt, Weld

**CARTON QTY:** x 10

**PACKED QTY:** x 1 set (gudgeon + strap)



HINGES AND PINS

## HINGES AND PINS

### Ornamental Hook & Band Set 450mm Pair



**CODE:** 563-4503

**PRODUCT FEATURES:** Profile max 45mm. Screws included.

Sold in Pairs.

**MATERIAL:** Mild Steel

**FINISH:** Black over Zinc

**PIN DIAMETER:** 16mm Ø

**BODY SIZE:** Hinge Strap: 480mm x 50mm

Gudgeon Plate: 155mm x 45mm

**MOUNTING HOLES:** 6mm Ø

**OVERALL LENGTH:** 490mm

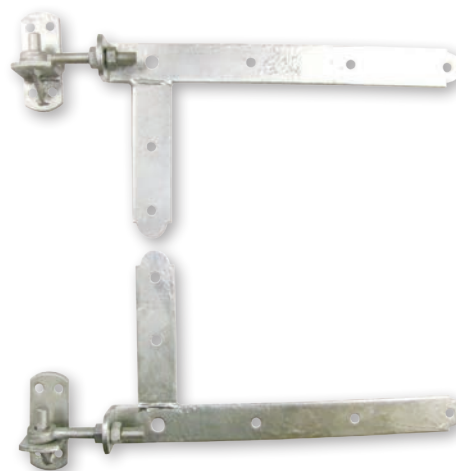
**THROW:** 28mm from post to centre of gudgeon

**MOUNT OPTIONS:** Screw (screws included)

**CARTON QTY:** x 5 Pairs

**PACKED QTY:** x 1 Pair

### Braced Adjustable Bands and Hooks on Plates Set - Top and Bottom Pair



**CODE:** 026-0101

**PRODUCT FEATURES:** Adjustable strap length, face mounting gudgeon. Sold as a full gate set with a top and bottom pair.

**MATERIAL:** Mild Steel

**FINISH:** Galvanised

**PIN DIAMETER:** 12mm Ø

**BODY SIZE:** Gudgeon plate: 40mm W x 100mm L x 6mm thick

Hinge strap: 365mm L x 195mm H x 6mm thick

**MOUNT HOLES:** 8mm Ø

**OVERALL LENGTH:** 415mm minimum to 475mm maximum

**PROJECTION:** Max projection = 45mm

Post to Gudgeon pin centre = 25mm

**MOUNT OPTIONS:** Screw, Bolt, Weld

**CARTON QTY:** x 5 Pairs

**PACKED QTY:** x 1 Pair

### Ornamental Hook & Band Set 300mm Pair

**CODE:** 563-3003

**PRODUCT FEATURES:** Projection max 45mm. Screws included.

Sold in Pairs.

**MATERIAL:** Mild Steel

**FINISH:** Black over Zinc

**PIN DIAMETER:** 16mm Ø

**BODY SIZE:** Hinge Strap: 330mm x 50mm

Gudgeon Plate: 155mm x 45mm

**MOUNTING HOLES:** 6mm Ø

**OVERALL LENGTH:** 340mm

**THROW:** 28mm from post to centre of gudgeon

**MOUNT OPTIONS:** Screw (screws included)

**CARTON QTY:** x 5 Pairs

**PACKED QTY:** x 1 Pair





## Butterfly Latch & Staple

**CODE:** BLS-112

**DESCRIPTION:** Butterfly Latch & Staple



## Double Gate Fastener

**CODE:** DGFL-117

**DESCRIPTION:** Double Gate Fastener - Loose

**CODE:** DGFS-118

**DESCRIPTION:** Double Gate Fastener - Spring



## Gate Clamp

**CODE:** GC2520

**DESCRIPTION:** Adjustable Gate Clamp - 25NB



## HINGES AND PINS

### NZ Gate Fasteners-Long Chain



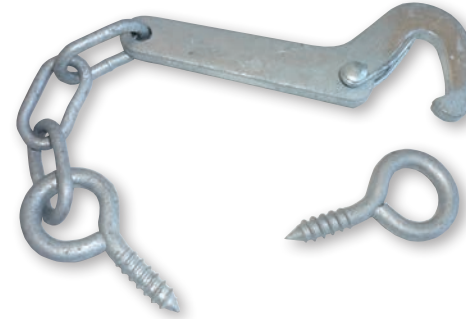
**CODE:** 071-4202  
**MATERIAL:** Mild Steel  
**FINISH:** Zinc Plated  
**BODY SIZE:** 420mm chain  
**OVERALL LENGTH:** 470mm  
**MOUNT OPTIONS:** Staples to post  
**OTHER FEATURES:** Staple included  
**CARTON QTY:** x 10  
**PACKED QTY:** x 1

### Gate Latch & Staple Heavy



**CODE:** GL20  
**DESCRIPTION:** Gate Latch & Staple Heavy  
**CODE:** GS21  
**DESCRIPTION:** Gate Staple Heavy - Spare

### Safety Gate Hook and Eyes



**CODE:** 070-0001  
**MATERIAL:** Mild Steel  
**FINISH:** Galvanized  
**BODY SIZE:** 150mm hook  
**OVERALL LENGTH:** 295mm  
**MOUNT OPTIONS:** Screws into post  
**OTHER FEATURES:** Includes eye screw  
**CARTON QTY:** x 10  
**PACKED QTY:** x 1

### Gate Latch & Staple Medium



**CODE:** GL65L  
**DESCRIPTION:** Gate Latch & Staple Medium - Loose  
**CODE:** GL66S  
**DESCRIPTION:** Gate Latch & Staple Medium - Spring  
**CODE:** GS67S  
**DESCRIPTION:** Gate Staple Medium - Spare



## Spring Fastener Latch 'U' Staple

**CODE:** 036-0001

**MATERIAL:** Mild Steel

**FINISH:** Galvanized

**MOUNTING HOLES:** 6mm

**OVERALL LENGTH:** 590mm

**MOUNT OPTIONS:** Bolt & Staple supplied, lever fixes to gate.

**OTHER FEATURES:** Needs 'Central Closing Gate Latch' for slam use.

**CARTON QTY:** x 5

**PACKED QTY:** x 1

**SHOWN FITTED TO GATE AT RIGHT USING 068-0001**

**CENTRAL CLOSING GATE CATCH**



## Spring Fastener Latch with Straight Staple

**CODE:** 037-0001

**MATERIAL:** Mild Steel

**FINISH:** Galvanized

**MOUNTING HOLES:** 6mm

**OVERALL LENGTH:** 590mm

**MOUNT OPTIONS:** Bolt & Staple supplied, lever fixes to gate.

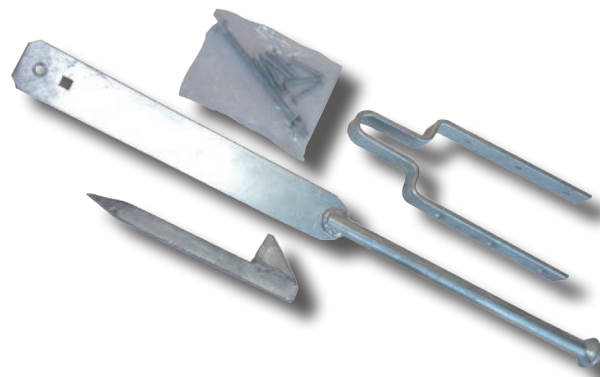
**OTHER FEATURES:** Needs 'Central Closing Gate Latch' for slam use.

**CARTON QTY:** x 5

**PACKED QTY:** x 1

**SHOWN FITTED TO GATE AT RIGHT USING 068-0001 CENTRAL**

**CLOSING GATE CATCH**



**SHOWN HERE USING THE 068-0001  
CENTRAL CLOSING GATE LATCH -  
SEE PAGE 37**

**HINGES AND PINS**



## LIFESTYLE LATCHES AND KEEPS

### Ornamental Ring Gate Latches 200mm Ring



**CODE:** 125-2001

**MATERIAL:** Mild Steel

**FINISH:** Galvanized

**PIN DIAMETER:** Shaft 7 x 7mm

**BODY SIZE:** Back plate 90mm diameter, 100mm diameter

**MOUNTING HOLES:** 6mm

**OVERALL LENGTH:** 235mm

**THROW:** 137mm

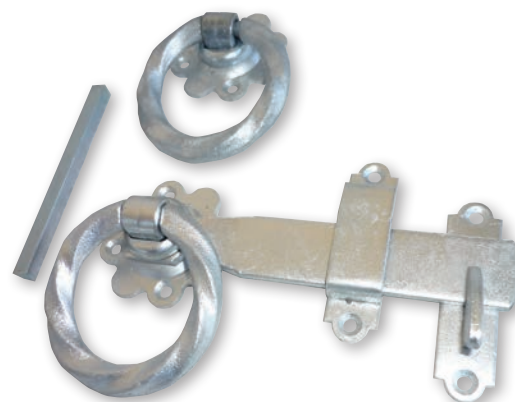
**MOUNT OPTIONS:** Screw

**OTHER FEATURES:** Screws and Keeps included

**CARTON QTY:** x 5

**PACKED QTY:** x 1

### Ornamental Ring Gate Latch 150mm



**CODE:** 125-1501

**MATERIAL:** Mild Steel

**FINISH:** Galvanized

**PIN DIAMETER:** 7 x 7mm shaft

**BODY SIZE:** 60mm diameter backplate, ring 75mm diameter

**MOUNTING HOLES:** 5mm

**OVERALL LENGTH:** 175mm

**THROW:** 105mm

**MOUNT OPTIONS:** Screw

**OTHER FEATURES:** screws and keeps supplied

**CARTON QTY:** x 5

**PACKED QTY:** x 1



## Ornamental Ring Gate Latch 250mm



**CODE:** 125-2501  
**MATERIAL:** Mild Steel  
**FINISH:** Galvanized  
**PIN DIAMETER:** 7 x 7mm shaft  
**BODY SIZE:** Backplate 90mm diameter  
**MOUNTING HOLES:** 6mm  
**OVERALL LENGTH:** 290mm  
**THROW:** 185mm  
**MOUNT OPTIONS:** Screw  
**OTHER FEATURES:** screws and keepers included  
**CARTON QTY:** x 5  
**PACKED QTY:** x 1

## 8" Gate Return Spring



**CODE:** 132-2002  
**PRODUCT FEATURES:** Screws, tension pin and winder included. Spring 25 Ø x 4 gauge. High tensile.  
**MATERIAL:** Pressed Steel  
**FINISH:** Bright Zinc  
**BODY SIZE:** Mounting plate: 80mm x 40mm  
**MOUNTING HOLES:** 6mm Ø  
**OVERALL LENGTH:** 360mm  
**MOUNT OPTIONS:** Screw, Bolt, Weld  
**CARTON QTY:** x 10  
**PACKED QTY:** x 1

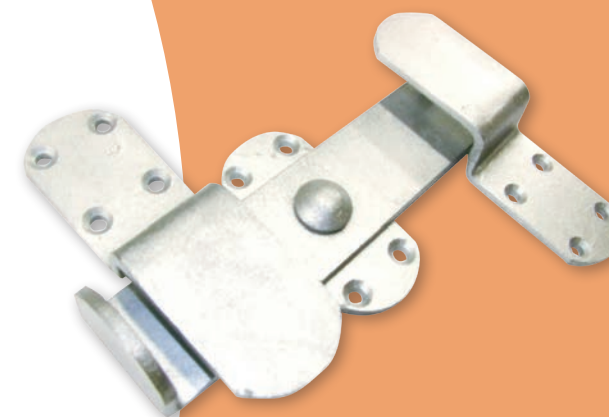
## 10" Gate Return Spring



**CODE:** 132-2502  
**PRODUCT FEATURES:** Screws, tension pin and winder included. Spring high tensile 25 Ø x 4 gauge  
**MATERIAL:** Pressed Steel  
**FINISH:** Bright Zinc  
**BODY SIZE:** Mounting plate: 80mm x 40mm  
**OVERALL LENGTH:** 410mm  
**MOUNT OPTIONS:** Screw, Bolt, Weld  
**CARTON QTY:** x 10  
**PACKED QTY:** x 1



## Kickover Stable Latch 200mm



**CODE:** 131-2401  
**PRODUCT FEATURES:** Traditional, easy to use latch for horse stables. Minimal protrusion. Install lower on door if it is to be kicked open.  
**MATERIAL:** Mild Steel  
**FINISH:** Galvanised  
**BODY SIZE:** 250mm x 50mm  
**MOUNTING HOLES:** 6mm Ø  
**OVERALL LENGTH:** 250mm  
**THROW:** 120mm  
**MOUNT OPTIONS:** Screw  
**CARTON QTY:** x 10  
**PACKED QTY:** x 1

## INDUSTRIAL AND MISCELLANEOUS HARDWARE

### Large Industrial Heavy Duty Spring Loaded Gate Wheels

**CODE:** 081-3685

**MATERIAL:** Mild Steel with solid rubber wheel

**BODY SIZE:** 240mm L x 60mm W x 6mm thick

**OVERALL LENGTH:** 585mm

**BODY SIZE:** 2 at 12mm square

**MOUNT OPTIONS:** Bolt, Weld, Screw, mounting made to your requirements, WCL-10 Clamp, and WCL-12 Clamp

**CARTON QTY:** x 3

**PACKED QTY:** x 1



### Medium Industrial Heavy Duty Spring Loaded Gate Wheels

**CODE:** 081-3683

**MATERIAL:** Mild Steel with solid rubber wheel

**BODY SIZE:** 170mm L x 40mm W x 6mm thick

**MOUNTING HOLES:** 2 at 12mm square

**OVERALL LENGTH:** 368mm

**MOUNT OPTIONS:** Bolt, Weld, Screw, WCL-08 or WCL-10 Clamp

**OTHER FEATURES:** 2 x bolts included, 120mm long

**CARTON QTY:** x 5

**PACKED QTY:** x 1



## Heavy Duty Spring Loaded Gate Wheels



**CODE:** 081-3681

**MATERIAL:** Mild Steel with solid rubber wheel

**BODY SIZE:** 170mm L x 40mm W x 6mm thick

**MOUNTING HOLES:** 2 at 12mm square

**OVERALL LENGTH:** 368mm

**MOUNT OPTIONS:** Bolt, Weld, Screw, WCL-08 or WCL-10 Clamp

**OTHER FEATURES:** 2 x bolts included, 120mm long

**CARTON QTY:** x 5

**PACKED QTY:** x 1

## Heavy Duty Spring Gate Wheel - with Pipe Clamps

**CODE:** 081-3681CL

**PRODUCT FEATURES:** Bolts also included. Oiling hole on wheel. Solid rubber rimmed so no scratching of driveway finishes. Clamps fitted ready to install onto pipe gate. Weight rating 60kgs.

**MATERIAL:** Mild Steel/Solid Rubber wheel over Iron Bearing

**FINISH:** Galvanised

**SHAFT DIAMETER:** 15x5mm

**BODY SIZE:** 170mm L x 40mm W x 6mm thick

**MOUNTING HOLES:** 12mm square

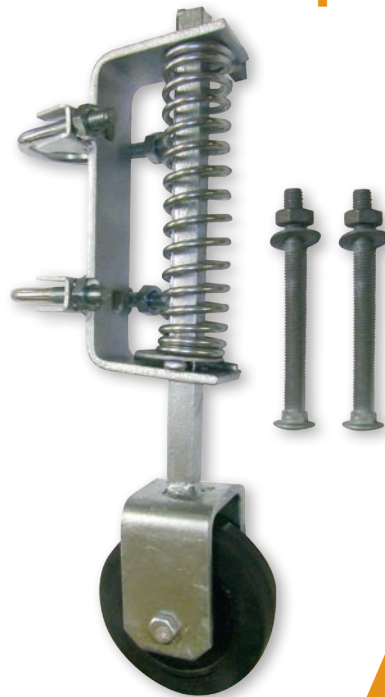
**OVERALL LENGTH:** 368mm

**TRAVEL:** 60mm (Note: Has very strong spring, normally only 20-30mm possible)

**MOUNT OPTIONS:** Bolt (included) or weld

**CARTON QTY:** x 5

**PACKED QTY:** x 1



INDUSTRIAL AND  
MISCELLANEOUS HARDWARE



## INDUSTRIAL AND MISCELLANEOUS HARDWARE

### Gate Cane Drop Bolt

**CODE:** 602-0032

**PRODUCT FEATURES:** Screws and locator plate included. Great for double gates, holds up when turned.

**MATERIAL:** Mild Steel

**FINISH:** Bright Zinc

**PIN DIAMETER:** 12mm Ø

**BODY SIZE:** 2x Mount Plates 33x50mm

**MOUNTING HOLES:** 5mm Ø

**OVERALL LENGTH:** 460mm

**THROW:** 90mm

**MOUNT OPTIONS:** Screw (included), bolt, weld

**CARTON QTY:** x 10

**PACKED QTY:** x 1



### Jailer Door & Gate Long Slam Latch 12mm Zinc

**CODE:** 110-4502 / JSL-4502

**PRODUCT FEATURES:** Luminous handle. Spring loaded with hold back. Long length for better access where needed.

Also makes great drop cane on double gates. Slammable if plate fitted.

**MATERIAL:** Mild Steel

**FINISH:** Bright Zinc

**PIN DIAMETER:** 12mm Ø

**BODY SIZE:** 260mm L x 40mm W x 4.5mm thick

**MOUNTING HOLES:** 6mm Ø

**OVERALL LENGTH:** 460mm

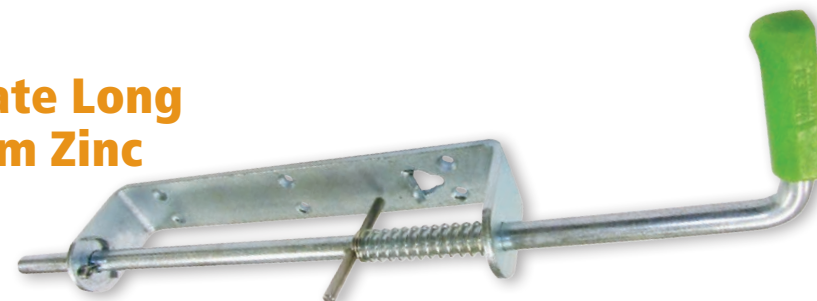
**PROJECTION:** 65mm

**THROW:** 25mm

**MOUNT OPTIONS:** Bolt, weld, screw

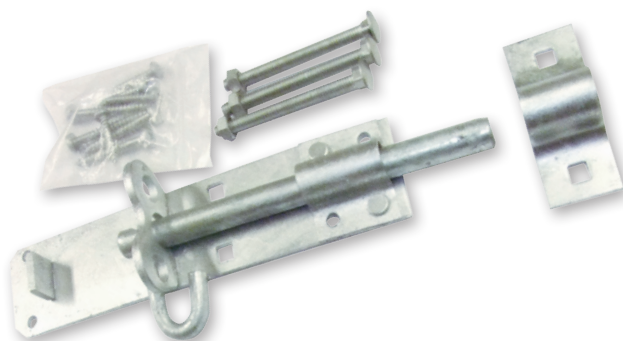
**CARTON QTY:** x 6

**PACKED QTY:** x 1





## Brenton Padbolt - Medium



**CODE:** 512-1501

**PRODUCT FEATURES:** Screws and 4x Bolts included plus keeper. Simple slide latch for basic door and gate applications. Can be padlocked.

**MATERIAL:** Mild Steel

**FINISH:** Galvanised

**PIN DIAMETER:** 12mm Ø

**BODY SIZE:** 180mm x 43mm

**MOUNTING HOLES:** 4mm Ø

**OVERALL LENGTH:** 180mm

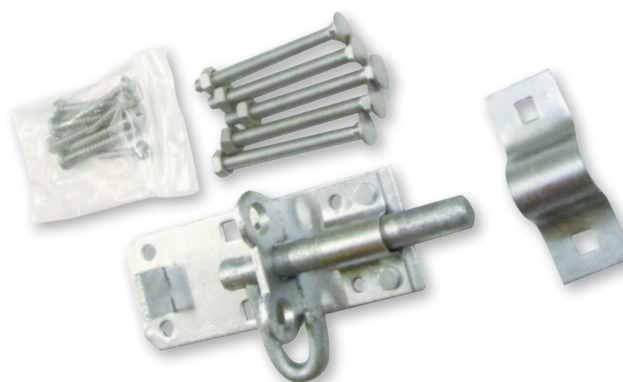
**THROW:** 40mm

**MOUNT OPTIONS:** Screws and bolts

**CARTON QTY:** x 10

**PACKED QTY:** x 1

## Brenton Padbolt - Small



**CODE:** 512-1001

**PRODUCT FEATURES:** Screws and 4x Bolts included plus Keeper. Simple slide latch for basic door and gate applications. Can be padlocked.

**MATERIAL:** Mild Steel

**FINISH:** Galvanised

**PIN DIAMETER:** 12mm Ø

**BODY SIZE:** 120mm x 43mm

**MOUNTING HOLES:** 4mm Ø

**OVERALL LENGTH:** 120mm

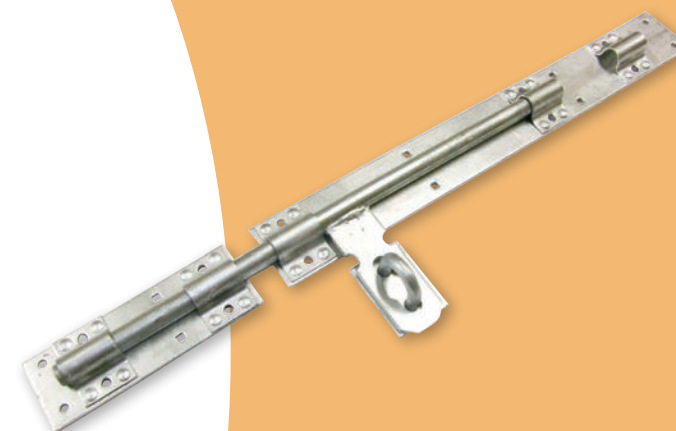
**THROW:** 35mm

**MOUNT OPTIONS:** Screws and bolts

**CARTON QTY:** x 10

**PACKED QTY:** x 1

## Heavy Sliding Bolt 450mm



**CODE:** 107-4501

**PRODUCT FEATURES:** Supplied with D-Ring so can be padlocked. Ideal for latching shed doors, both opening and sliding; and to latch double gates and double doors.

**MATERIAL:** Mild Steel

**FINISH:** Galvanised

**PIN DIAMETER:** 16mm Ø

**BODY SIZE:** Thick plate: 460mm x 60mm x 4mm

Keeper: 165mm x 60mm x 4mm thick plate

**MOUNTING HOLES:** 6mm Ø

**OVERALL LENGTH:** 625mm

**THROW:** 210mm

**MOUNT OPTIONS:** Screw, Bolt, Weld

**CARTON QTY:** x 5

**PACKED QTY:** x 1

INDUSTRIAL AND  
MISCELLANEOUS HARDWARE

## Self Locking Lift Type Latch

**CODE:** 064-0111

**PRODUCT FEATURES:** Latch pin included. Can be padlocked. Horses can't lift to open. Push gate shut and self latches close.

**MATERIAL:** Mild Steel

**FINISH:** Galvanised

**SHAFT DIAMETER:** 12mm Ø

**BODY SIZE:** 180mm H x 30mm W x 120mm projection

**MOUNTING HOLES:** 11mm Ø

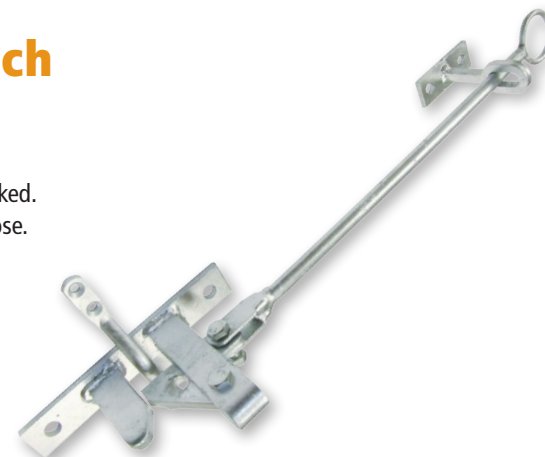
**OVERALL LENGTH:** 565mm from top of lift loop

**MOUNT OPTIONS:** Bolt, Weld, Screw

**THROW:** Opening 30mm

**CARTON QTY:** x 10

**PACKED QTY:** x 1



## Heavy Locking Garage Door Bolts

**CODE:** 117-6001

**MATERIAL:** Mild Steel

**FINISH:** Galvanized

**PIN DIAMETER:** 19mm diameter

**BODY SIZE:** 730mm x 70mm

**MOUNTING HOLES:** 6.5mm diameter

**OVERALL LENGTH:** 730mm

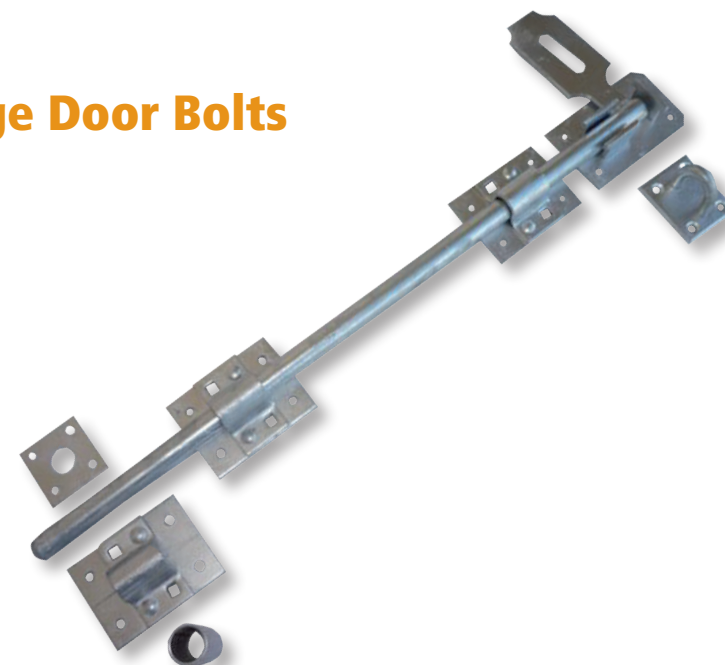
**THROW:** Variable up to 340mm

**MOUNT OPTIONS:** Bolt, Weld, Screw

**OTHER FEATURES:** Includes staple to lock, horizontal and vertical mounting keeps.

**CARTON QTY:** x 5

**PACKED QTY:** x 1





## Towing Pin



**CODE:** 309-0258

**MATERIAL:** Mild Steel

**FINISH:** Zinc Plated

**PIN DIAMETER:** 25mm

**BODY SIZE:** 200mm x 25mm diameter

**OVERALL LENGTH:** including pull ring 268mm

**OTHER FEATURES:** Lynch Pin 10mm diameter x 45mm long.

**CARTON QTY:** x 10

**PACKED QTY:** x 1

## Keeper/Staple



**CODE:** 145-0022

**MATERIAL:** Mild Steel

**FINISH:** Zinc Plated

**BODY SIZE:** 65x18mm clamp plate

**MOUNTING HOLES:** 2 at 12mm diameter

**OVERALL LENGTH:** 65mm

**MOUNT OPTIONS:** Self clamps

**OTHER FEATURES:** For effective clamping of latches to pipe gates

**CARTON QTY:** x 10

**PACKED QTY:** x 1

## Central Closing Gate Latches



**CODE:** 068-0001

**MATERIAL:** Mild Steel

**FINISH:** Galvanized

**PIN DIAMETER:** Accepts up to 16mm

**BODY SIZE:** 150mm x 40mm x 5mm

**MOUNTING HOLES:** 2 at 12mm diameter

**OVERALL LENGTH:** 150mm

**MOUNT OPTIONS:** Bolt, Weld, Screw

**OTHER FEATURES:** For use with spring fastener gate latch, fixed horizontally

**CARTON QTY:** x 5

**PACKED QTY:** x 1

## Gate Staple on Elongated Plate

**CODE:** 078-0751

**MATERIAL:** Mild Steel

**FINISH:** Galvanized

**BODY SIZE:** 200mm x 40mm x 5mm plate

**MOUNTING HOLES:** 2 at 12mm diameter

**OVERALL LENGTH:** 200mm

**THROW:** Projection 75mm x 40mm

**MOUNT OPTIONS:** Bolt, Weld, Screw

**OTHER FEATURES:** Use as handle, lug, keeper, staple

**CARTON QTY:** x 10

**PACKED QTY:** x 1



## 'D' Bracket

**CODE:** 078-0801

**MATERIAL:** Mild Steel

**FINISH:** Galvanized

**BODY SIZE:** 162mm x 25mm x 5mm plate

**MOUNTING HOLES:** 2 at 12mm diameter

**OVERALL LENGTH:** 162mm

**THROW:** Projection 90mm long

**MOUNT OPTIONS:** Bolt, Weld, Screw

**OTHER FEATURES:** Use as handle, lug, keeper, staple

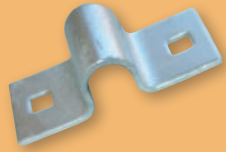
**CARTON QTY:** x 10

**PACKED QTY:** x 1



INDUSTRIAL AND  
MISCELLANEOUS HARDWARE

## INDUSTRIAL AND MISCELLANEOUS HARDWARE



### Staples for Latches 12mm

**CODE:** 105-0121

**MATERIAL:** Mild Steel

**FINISH:** Galvanized

**PIN DIAMETER:** Accepts up to 12mm

**BODY SIZE:** 65mm x 27mm x 2mm thick

**MOUNTING HOLES:** 2 at 6mm diameter

**OVERALL LENGTH:** 65mm

**MOUNT OPTIONS:** Bolt, Weld, Screw

**CARTON QTY:** x 20

**PACKED QTY:** x 2



### Staples for Latches 16mm

**CODE:** 105-0161

**MATERIAL:** Mild Steel

**FINISH:** Galvanized

**PIN DIAMETER:** Accepts up to 19mm

**BODY SIZE:** 66mm x 38mm x 2mm thick

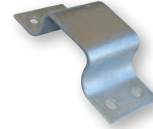
**MOUNTING HOLES:** 4 at 6mm diameter

**OVERALL LENGTH:** 66mm

**MOUNT OPTIONS:** Bolt, Weld, Screw

**CARTON QTY:** x 20

**PACKED QTY:** x 2



### Elongated Keeps 12mm

**CODE:** 106-0121

**MATERIAL:** Mild Steel

**FINISH:** Galvanized

**PIN DIAMETER:** Accepts up to 14mm diameter pin

**BODY SIZE:** 90mm x 40mm x 2mm thick

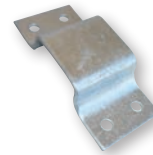
**MOUNTING HOLES:** 4 at 5mm diameter

**OVERALL LENGTH:** 90mm

**MOUNT OPTIONS:** Bolt, Weld, Screw

**CARTON QTY:** x 20

**PACKED QTY:** x 2



### Elongated Keeps 16mm

**CODE:** 106-0161

**MATERIAL:** Mild Steel

**FINISH:** Galvanized

**PIN DIAMETER:** Accepts up to 19mm diameter pin

**BODY SIZE:** 90mm x 40mm x 2mm thick

**MOUNTING HOLES:** 4 at 5mm diameter

**OVERALL LENGTH:** 90mm

**MOUNT OPTIONS:** Bolt, Weld, Screw

**CARTON QTY:** x 20

**PACKED QTY:** x 2



### Gatamate Hook on Plate

**CODE:** 244-0501

**MATERIAL:** Mild Steel

**FINISH:** Galvanized

**PIN DIAMETER:**

**BODY SIZE:** 50mm x 50mm x 4mm plate

**MOUNTING HOLES:** 4 at 5mm diameter

**OVERALL LENGTH:** 68mm

**MOUNT OPTIONS:** Bolt, Weld, Screw

**CARTON QTY:** x 10

**PACKED QTY:** x 1



### Gatamate Rings on Plate

**CODE:** 246-0501

**MATERIAL:** Mild Steel

**FINISH:** Galvanized

**PIN DIAMETER:** Ring diameter 68mm

**BODY SIZE:** 50mm x 50mm x 4mm plate

**MOUNTING HOLES:** 4 at 5mm diameter

**OVERALL LENGTH:** 90mm

**MOUNT OPTIONS:** Bolt, Weld, Screw

**CARTON QTY:** x 10

**PACKED QTY:** x 1



## Suffolk Gate & Door Thumb Latch Set - Galvanised



**CODE:** 123-0021

**PRODUCT FEATURES:** Open from either side of gate. Simple thumb lift action latch. Includes handle, latch lever, lever guide and keeper

**MATERIAL:** Mild Steel

**FINISH:** Galvanised

**BODY SIZE:** Handle Plate: 205mm L x 45mm W

Latch Lever: 190mm L

**MOUNTING HOLES:** 5mm Ø

**OVERALL LENGTH:** 190mm (Latch length)

**MAX GATE THICKNESS:** 80mm

**MOUNT OPTIONS:** Screw

**CARTON QTY:** x 10

**PACKED QTY:** x 1

## Suffolk Gate & Door Thumb Latch Set - Black



**CODE:** 123-0023

**PRODUCT FEATURES:** Open from either side of gate. Simple thumb lift action latch. Includes handle, latch lever, lever guide and keeper

**MATERIAL:** Mild Steel

**FINISH:** Black Powder Coated

**BODY SIZE:** Handle Plate: 205mm L x 45mm W

Latch Lever: 190mm L

**MOUNTING HOLES:** 5mm Ø

**OVERALL LENGTH:** 190mm (Latch length)

**MAX GATE THICKNESS:** 80mm

**MOUNT OPTIONS:** Screw

**CARTON QTY:** x 10

**PACKED QTY:** x 1

## Weld-On Pin/Socket Base

**CODE:** WOP1640

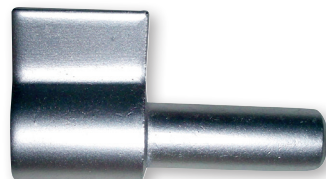
**DESCRIPTION:** 16 x 40 Weld-On Pin/Socket Base

**CODE:** WOP2050

**DESCRIPTION:** 20 x 50 Weld-On Pin/Socket Base

**CODE:** WOP2070

**DESCRIPTION:** 20 x 70 Weld-On Pin/Socket Base



## Weld-On Pin/Triangle Base

**CODE:** WOP1640

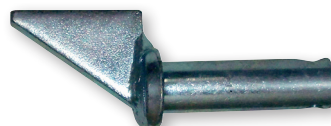
**DESCRIPTION:** 16 x 40 Weld-On Pin/Triangle Base

**CODE:** WOP2050

**DESCRIPTION:** 20 x 50 Weld-On Pin/Triangle Base

**CODE:** WOP2070

**DESCRIPTION:** 20 x 70 Weld-On Pin/Triangle Base



## Rising Double Strap Hinge & Rocker Plate Set for 3" Gate



**CODE:** 056-1251

**PRODUCT FEATURES:** 75mm/3" opening on double strap hinge. Unique, self-closing action using the weight of the gate. Sold as a set with gudgeon and strap, only necessary to install for bottom gate hinge to work effectively.

**MATERIAL:** Mild Steel

**FINISH:** Galvanised

**BODY SIZE:** Rocker Plate: 175mm x 42mm

**MOUNTING HOLES:** 12mm Ø + coach bolt hole

**OVERALL LENGTH:** 210mm

**THROW:** 66mm offset rocking. 110mm from post to edge of gate

**MOUNT OPTIONS:** Bolt, Tek screw

**CARTON QTY:** x 4

**PACKED QTY:** x 1

## Weld-On Socket

**CODE:** WOS164025

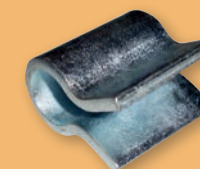
**DESCRIPTION:** 16 x 40 x 2.5 Weld-On Socket

**CODE:** WOS204025

**DESCRIPTION:** 20 x 40 x 2.5 Weld-On Socket

**CODE:** WOS205050

**DESCRIPTION:** 20 x 50 x 5.0 Weld-On Socket



INDUSTRIAL AND  
MISCELLANEOUS HARDWARE



*Amuri*  
PRODUCTS LTD.

PO Box 22, Rangiora 7440  
Ph 0800 966 333  
Fax 0800 961 333  
Email [sales@amuriproducs.co.nz](mailto:sales@amuriproducs.co.nz)